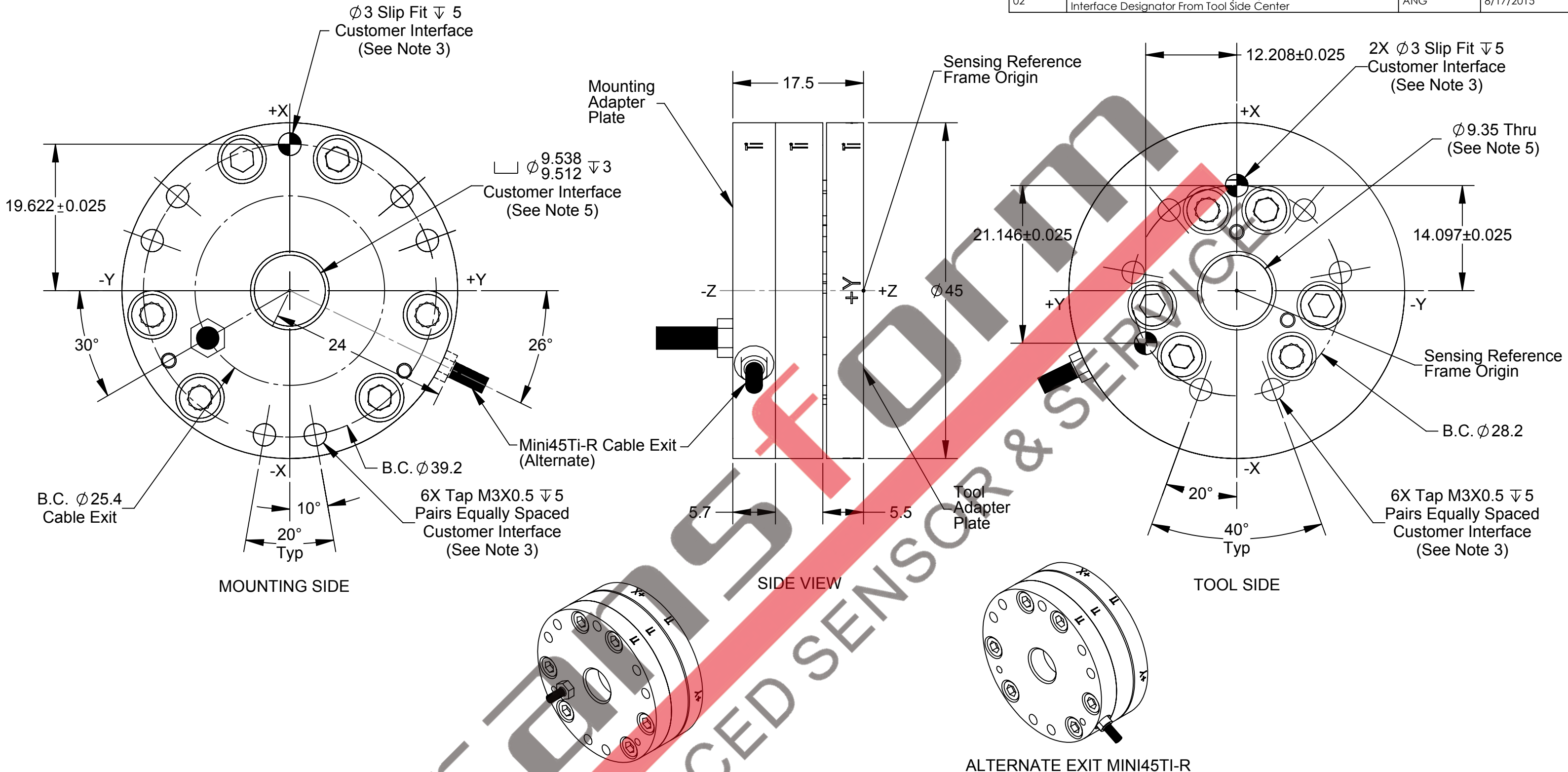


Rev.	Description	Initiator	Date
02	ECO13701: Added Radial Exit Option; Removed Customer Interface Designator From Tool Side Center	ANG	8/17/2015



- Notes:
1. Material: Transducer, Mounting and Tool Adapter made of Titanium Ti-6Al-4V Grade 5
 2. **WARNING: DO NOT LOOSEN OR REMOVE INTERFACE PLATES OR CABLE FITTING DUE TO POTENTIAL DAMAGE.**
 3. **DO NOT EXCEED INTERFACE DEPTH, MAY CAUSE DAMAGE.**
 4. Standard connector (not shown) has 17mm diameter & is 67.5mm long.
 5. Do not allow items passing through center hole to touch both the Mounting and Tool Adapter Plates or accuracy will be compromised.

NOTES: UNLESS OTHERWISE SPECIFIED.
DO NOT SCALE DRAWING. ALL DIMENSIONS ARE IN MILLIMETERS.



1031 Goodworth Drive, Apex, NC 27539, USA
Tel: +1.919.772.0115 Email: info@ati-ia.com
Fax: +1.919.772.8259 www.ati-ia.com
ISO 9001 Registered Company

PROPERTY OF ATI INDUSTRIAL AUTOMATION, INC. NOT TO BE REPRODUCED IN ANY MANNER EXCEPT ON ORDER OR WITH PRIOR WRITTEN AUTHORIZATION OF ATI.

DRAWN BY: R. Chambers 1/2/13		TITLE	
CHECKED BY: J. Walser 1/4/13		Mini45 Titanium Transducer	
PROJECT # 121116-1	SHEET 1 OF 1	SCALE 2:1	SIZE B
		DRAWING NUMBER 9230-05-1440	REVISION 02

