

## Alloy Steel Double-Ended Shear Beam

### FEATURES

- Capacities 10k–75k lbs
- Low profile design for weigh bridge and silo applications
- Nickel plated alloy steel construction
- NTEP approved
- IP67 protection
- **Optional**
  - EEx ia IIC T6 hazardous area approval
  - FM approval available



### APPLICATIONS

- Weigh bridges
- Tank and silo weighing

### DESCRIPTION

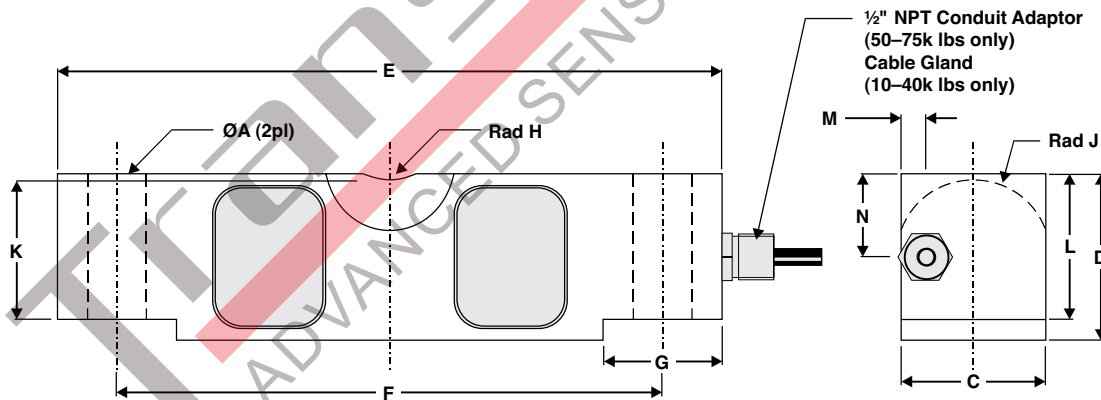
Model 4158 is a double-ended shear beam load cell designed for high capacity silo weighing applications. This high accuracy load cell is designed to meet NTEP standards. When combined with suitable mounting arrangements, this load cell will provide a simple, accurate and reliable weighing system.

Nickel plated and full environmental sealing assure long-term reliability. For hazardous environments, this load cell has a EEX ia IIC T6 approved option.

When used in conjunction with Tedea-Huntleigh's custom designed mount, the unit combines ease of installation with both side load and lift-off protection.



### OUTLINE DIMENSIONS in millimeters



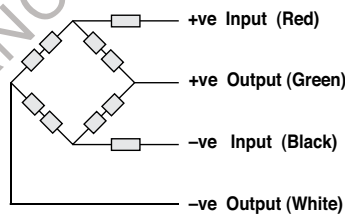
CAPACITY	ØA	C	D	E	F	G	RadH	Rad J	K	L	M	N
10–25k lbs	17.3	42.9	49.3	196.9	165.1	35.9	19.1	22.9	41.4	43.2	8.8	13.6
40k lbs	20.6	49.3	62.0	260.4	215.9	49.0	25.4	28.5	50.8	53.3	9.0	31.0
50–75k lbs	26.9	62.0	74.7	260.4	215.9	49.0	25.4	34.8	64.5	67.3	10.4	37.4

Alloy Steel Double-Ended Shear Beam

SPECIFICATIONS			
PARAMETER	VALUE		UNIT
Rated capacity—R.C. (E <sub>max</sub> )	10, 20, 25, 40, 50, 60, 75 <sup>(1)</sup>		Klbs
NTEP/OIML accuracy class	NTEP	Non-Approved	
Maximum no. of intervals (n)	10000 IIIIL	1000	
Y = E <sub>max</sub> /V <sub>min</sub>	12000	4000	Maximum available
Rated output—R.O.	3.0		mV/V
Rated output tolerance	0.075		±mV/V
Zero balance	0.09		±mV/V
Zero return, 30 min.	0.030	0.050	±% of applied load
Total error	0.30	0.050	±% of rated output
Temperature effect on zero	0.0013	0.0067	±% of rated output/°C
Temperature effect on output	0.0025	0.0040	±% of applied load/°C
Temperature range, compensated	-10 to 40		°C
Temperature range, safe	-30 to +70		°C
Maximum safe central overload	150		% of R.C.
Ultimate central overload	300		% of R.C.
Excitation, recommended	10		VDC or VAC RMS
Excitation, maximum	15		VDC or VAC RMS
Input impedance	780±20		Ω
Output impedance	705±5		Ω
Insulation resistance	>1000		MΩ
Cable length	7.5		m
Cable type	6-wire, braided, PVC, dual floating screen		Standard
Construction	Nickel-plated alloy steel		
Environmental protection	IP67		

<sup>(1)</sup>10k lbs is not approved by NTEP  
All specifications subject to change without notice.

Wiring Schematic Diagram



## Disclaimer

ALL PRODUCTS, PRODUCT SPECIFICATIONS AND DATA ARE SUBJECT TO CHANGE WITHOUT NOTICE.

Vishay Precision Group, Inc., its affiliates, agents, and employees, and all persons acting on its or their behalf (collectively, "VPG"), disclaim any and all liability for any errors, inaccuracies or incompleteness contained herein or in any other disclosure relating to any product.

The product specifications do not expand or otherwise modify VPG's terms and conditions of purchase, including but not limited to, the warranty expressed therein.

VPG makes no warranty, representation or guarantee other than as set forth in the terms and conditions of purchase. **To the maximum extent permitted by applicable law, VPG disclaims (i) any and all liability arising out of the application or use of any product, (ii) any and all liability, including without limitation special, consequential or incidental damages, and (iii) any and all implied warranties, including warranties of fitness for particular purpose, non-infringement and merchantability.**

Information provided in datasheets and/or specifications may vary from actual results in different applications and performance may vary over time. Statements regarding the suitability of products for certain types of applications are based on VPG's knowledge of typical requirements that are often placed on VPG products. It is the customer's responsibility to validate that a particular product with the properties described in the product specification is suitable for use in a particular application. You should ensure you have the current version of the relevant information by contacting VPG prior to performing installation or use of the product, such as on our website at [vpgsensors.com](http://vpgsensors.com).

No license, express, implied, or otherwise, to any intellectual property rights is granted by this document, or by any conduct of VPG.

The products shown herein are not designed for use in life-saving or life-sustaining applications unless otherwise expressly indicated. Customers using or selling VPG products not expressly indicated for use in such applications do so entirely at their own risk and agree to fully indemnify VPG for any damages arising or resulting from such use or sale. Please contact authorized VPG personnel to obtain written terms and conditions regarding products designed for such applications.

Product names and markings noted herein may be trademarks of their respective owners.

Copyright Vishay Precision Group, Inc., 2014. All rights reserved.