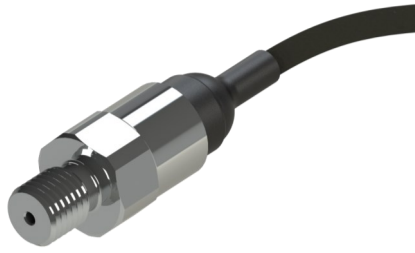


ASUH SERIES HYBRID PRESSURE TRANSDUCER



The ASUH Series of High Performance Sub-Miniature Pressure Transducers have been designed for demanding installations in motorsport and automotive applications. The new design of the ASUH utilises miniaturised hybrid components, allowing savings in both size and weight; this transducer has enhanced performance at elevated temperature and is optimised for extreme installations such as on-engine or transmissions. With a modular construction and programmable amplifier, this provides a fast delivery time for standard and custom configurations. Pressure ranges are available between 10 to 400 Bar in either Absolute, Gauge or Sealed Gauge reference. Industry standard 3-wire electrical connections allow configuration with most common ECU's and data logging systems.

TECHNICAL SPECIFICATIONS

Pressure Reference	Absolute, Gauge and Sealed Gauge
Standard Pressure Ranges (Bar)	10, 15, 20, 35, 50, 100, 200, 400
Proof Pressure (Overload)	200% of Range
Burst Pressure	>500% of Range
Accuracy	±0.25% FS Combined Linearity & Hysteresis (CNLH)
Thermal Accuracy	Zero ±0.01% FS/°C (Sensitivity ±0.01% of Reading /°C)
Output	0.5V to 4.5V (±0.5%)
Supply	5V (±0.5V) Ratiometric or 8-16Vdc
Operating Temperature Range	-40°C to +150°C
Compensated Temperature Range	0°C to +125°C
Bandwidth	0-1000Hz, 5000Hz (Selectable at time of Order)
Construction	Stainless Steel (17-4ph)
Electrical Connection	50cm 26AWG, 55Spec Wire + DR25 Sleeve
Process Connection (Thread Size)	Please see Part Number Configurator
Protection Class	IP67
EMC Protection & Vibration	EN E50082-1 and Mil-Std-810C, Curve L, 20G
Weight	20g (Including Cable)
Options	Cable Spec, Connector Fitted, Thread Size & Labelling

Ka Sensors adopts a continuous development program which sometimes necessitates specification changes without notice.

Sensors For Motorsport

Features

- Sub-Miniature Size
- 10 to 400 Bar Range
- Rugged Construction
- 0-5000Hz Bandwidth
- ±0.25% Accuracy

Applications

- Coolant
- Brakes
- Water
- Boost
- Fuel
- Oil

kasensors.com
sales@kasensors.com
+44(0)1476 568057

ASUH 10.18

PART NUMBER CONFIGURATOR

Pressure Reference

Pressure Range

Supply Voltage

Accuracy (CNLH)

Accuracy (Thermal Shift)

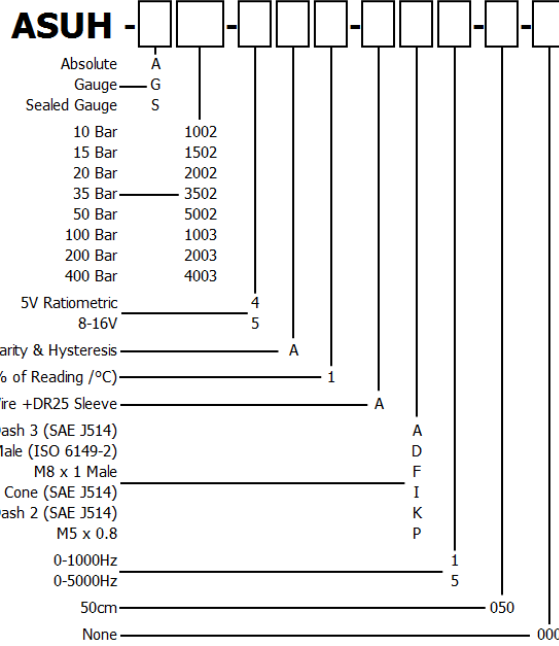
Electrical Connection

Process Connection

Bandwidth

Cable Length

Special Code



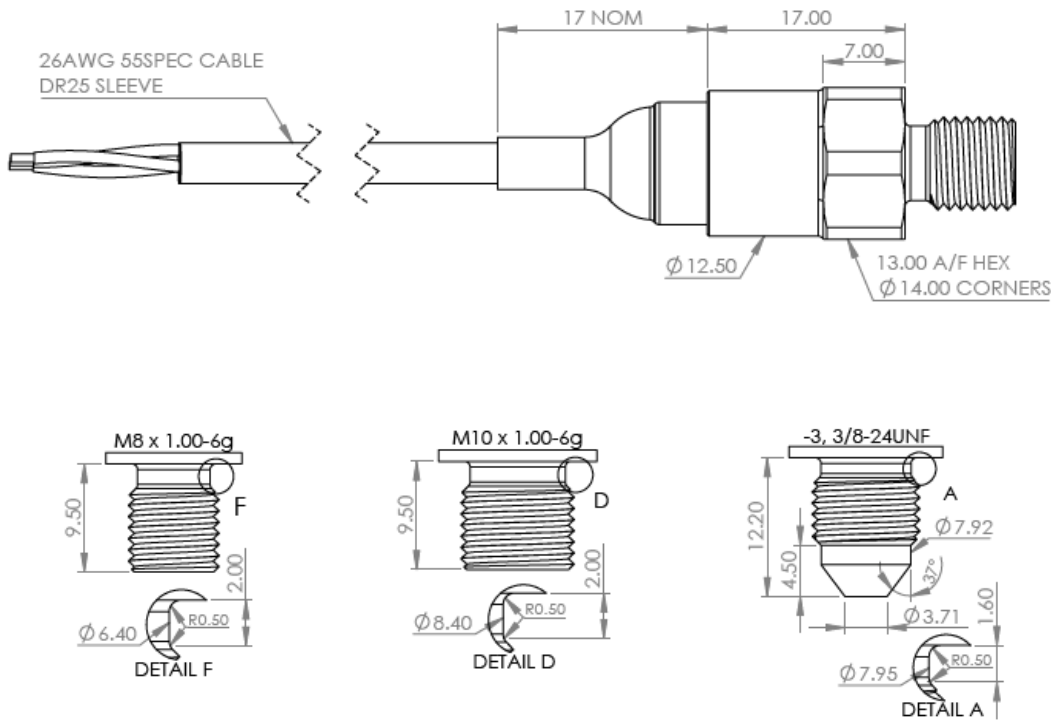
The KA configuration tool is used to specify a standard KA Sensor, other options are available.

Sense
Analyse
Control

Services for:

- Data Logging
- Telemetry
- Controls
- Wiring

MECHANICAL DETAILS



Contact us

KA Sensors Ltd
Unit 14 & 15
The Old Malthouse
Springfield Road
Grantham
Lincolnshire
United Kingdom
NG31 7BG

kasensors.com
sales@kasensors.com
+44(0)1476 568057

CONNECTION DETAILS

+Ve Supply	0V Supply	Signal
Red	Black	White

ASUH 10.18