

SPI SERIES SPEED SENSOR



The SPI Series of Speed Sensors have been designed as simple compact sensors suited to the demanding motorsport and automotive testing industries.

The main construction is aluminium which provides for a robust sensor, even in exposed areas such as the engine bay or wheel hub. The sensor will continuously operate at temperatures up to 150°C.

By using a proven 'Hall Effect' technology, the SPI detects a change in magnetic field as the target passes the sensors tip. The output transistor switches its state as the target passes, so giving a measurable pulse train which can be used within standard data logging equipment or ECU's.

TECHNICAL SPECIFICATIONS

Measurement Frequency	8KHz
Sensor Type	Hall Effect
Mounting	Flange with Single Screw Fixing
Target Size (Width x Length)	8mm Wide x 1mm Long (Minimum)
Sensing Range (Air Gap)	2 to 3mm
Output	NPN. Internal Pullup Resistor Value 10KΩ
Max Load Current	25mA Max
Supply	5-24Vdc (10mA)
Operating Temperature Range	-40°C to +150°C
Construction	Anodised Aluminium
Electrical Connection	Please See Part Number Configurator
Cable Exit	Straight or Right Angle
Mechanical Dimensions	Probe Diameter: 17.9mm & 31.8mm Long
Protection Class	IP67
Vibration Protection	5KHz Sine at 100g
Weight (Excluding Cable)	25g
Options	Cable Spec, Connection Options and Labelling

KA Sensors adopts a continuous development program which sometimes necessitates specification changes without notice.

Sensors For Motorsport

Features

- Miniature Size
- Flange Mounting
- NPN Output
- 5-24V Supply
- IP67 Sealed
- Rugged Design

Applications

- Speed
- Crank Speed / Position
- Wheel Speed
- Drive Shaft Speed
- Traction Control
- Launch Control

kasensors.com

sales@kasensors.com

+44(0)1476 568057

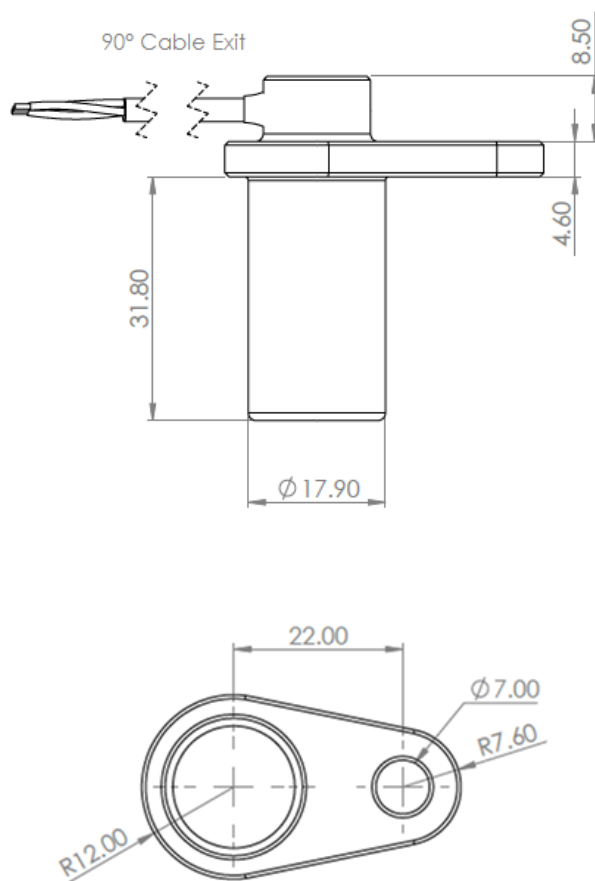
SPI 10.18

PART NUMBER CONFIGURATOR

Flange	Single Flange — FL						
Output	NPN. Internal Pullup Resistor Value 10K Ω — NPN						
Sensor Length	17.9mm & 31.8mm Diameter Below Flange — 17						
Electrical Connection	22AWG 55Spec Cable + DR25 Sleeve — 2						
	24AWG 55Spec Cable + DR25 Sleeve — 4						
	26AWG 55Spec Cable + DR25 Sleeve — 6						
Cable Exit	90° Right Angle — RT						
	Straight — ST						
Cable Length	50cm — 050						
	100cm — 100						
Special Code	None — 000						

The KA configuration tool is used to specify a standard KA Sensor, other options are available.

MECHANICAL DETAILS



CONNECTION DETAILS

+Ve Supply	0V Supply	Signal
Red	Black	White

*Sense
Analyse
Control*

Services for:

- Data Logging
- Telemetry
- Controls
- Wiring

Contact us

KA Sensors Ltd
Unit 14 & 15
The Old Malthouse
Springfield Road
Grantham
Lincolnshire
United Kingdom
NG31 7BG

kasensors.com
sales@kasensors.com
+44(0)1476 568057

SPI 10.18