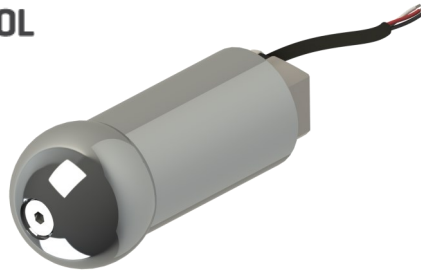


GST SERIES GEAR LEVER LOAD CELL



The GST Series of Gear Lever Load Cells are designed for the detection and measurement of tension and compression forces in Gear Shift Application.

Construction is aluminium with a built-in amplifier, allowing for a very simple installation with only a 3 wire connection needed. Mechanical mounting is via various available threads, with custom designs also possible.

The output signal is proportional to the amount of force and is linear 0.5 to 4.5V and can be connected to most common ECU's. Configuration for either Sequential or 'H' Pattern Gearboxes. The Load Cell can be supplied without a cover.

The typical application is for use such as: Flat Shift, Quickshifter, Torque Cut, Ignition Cut and Clutch-free Gearshift on race vehicles. The Load Cells are generally installed on top of the gear change lever and will detect the level of force applied by the driver to change gear.

TECHNICAL SPECIFICATIONS

Range	±150N to ±1000N
Safe Over Range	±2000N
Accuracy	±0.5% FS Combined Linearity & Hysteresis (CNLH)
Thermal Effects	Zero ±0.01% FS/°C (Sensitivity ±0.01% of Reading /°C)
Output	0.5V to 4.5V and 1mV/V (+V in Direction of Arrow)
Operating Temperature Range	-20°C to +85C
Compensated Temperature Range	0°C to +85C
Construction	Aluminium
Electrical Connection	100cm, 55Spec, 26AWG Cable + DR25 Sleeve
Thread Sizes	Please See Part Number Configurator
Protection Class	IP67
EMC Protection	EN 50082-1
Vibration Protection	Mil-Std-810C, Curve L, 20G
Weight	No Cover: 100g (Excluding Cable) Aluminium Cover: 160g Nylon Cover: 260g
Options	Connector Fitted, Thread Size, Cover Fitted and Labelling

KA Sensors adopts a continuous development program which sometimes necessitates specification changes without notice.

Sensors For Motorsport

Features

- ±150 & ±1000N
- Sequential or 'H' Pattern Gearbox
- Built-In Amplifier
- 5V or 8-16V Supply
- ±0.5% Accuracy
- Rugged Construction

Applications

- Gear Shift
- Steering
- General Testing

kasensors.com
sales@kasensors.com
+44(0)1476 568057

GST 10.18

PART NUMBER CONFIGURATOR

	GST						
Range	±150N	0150					
	±250N	0250					
	±500N	0500					
	±1000N	1000					
Supply	5V Ratiometric		4				
	8-16V		5				
Output	1mV/V			1			
	0.5V to 4.5V (0.5V Offset)			2			
	0.5V to 4.5V (2.5V Offset)			3			
	1mV/V (Reverse Output)			4			
	0.5 to 4.5V (0.5V Offset) - Reverse Output			5			
	0.5 to 4.5V (2.5V Offset) - Reverse Output			6			
Thread Size	M10 x 1.5				1		
	M12 x 1.75				2		
	M12 x 1.25				3		
	9/16" 18 UNF				4		
	Quaife 12.7mm (1/2 Inch) Diameter Plain Shaft				6		
	M14 x 1.25				7		
	M12 x 1.5				8		
Cable Length	100cm					100	
Special Code: One	No Cover						000
	Aluminium Domed						ADM
	Aluminium Straight						AST
	Nylon Domed						NDM
	Nylon Straight						NST
Special Code: Two	None						000

The KA configuration tool is used to specify a standard KA Sensor, other options are available.

Sensors For Motorsport

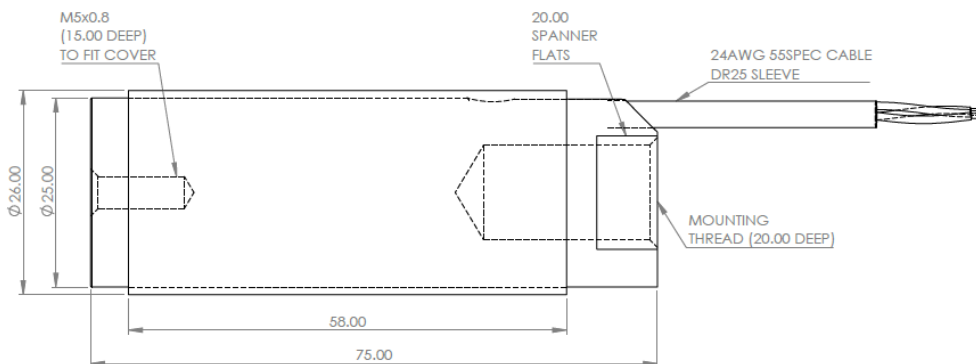
Features

- ±150 & ±1000N
- Sequential or 'H' Pattern Gearbox
- Built-In Amplifier
- 5V or 8-16V Supply
- ±0.5% Accuracy
- Rugged Construction

Applications

- Gear Shift
- Steering
- General Testing

MECHANICAL DETAILS



Please Refer to Page 3 for Cover Options.

CONNECTION DETAILS

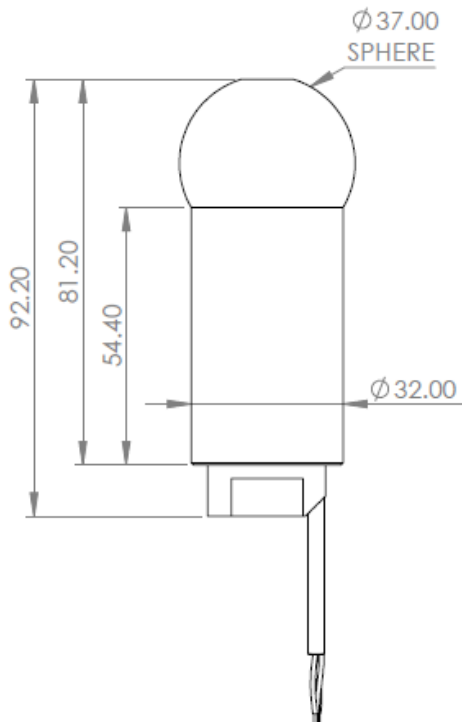
+Ve Supply	0V Supply	Signal
Red	Black	White

kasensors.com
sales@kasensors.com
+44(0)1476 568057

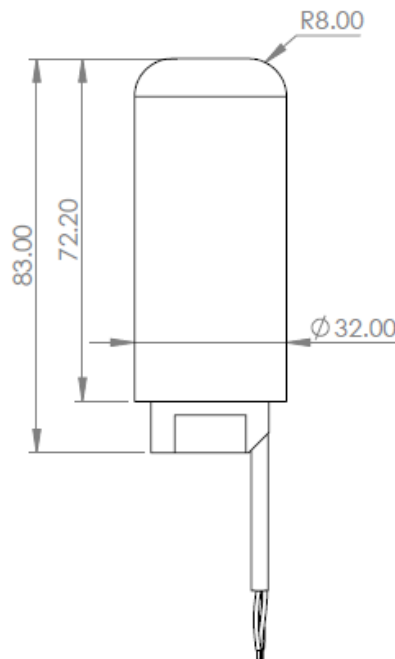
GST 10.18

COVER OPTIONS

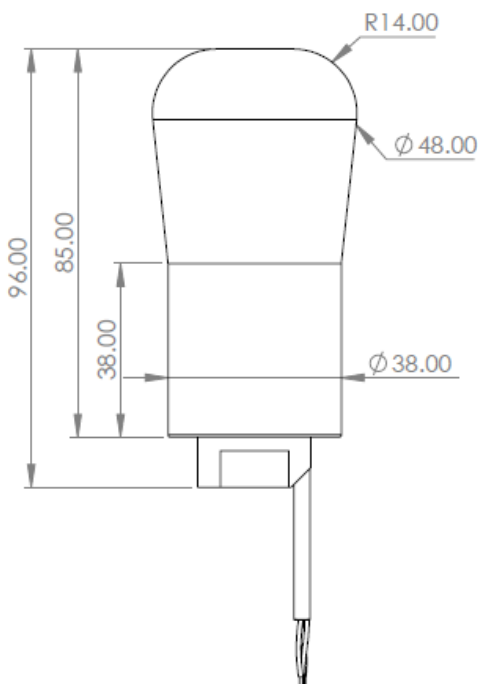
ALUMINIUM DOMED



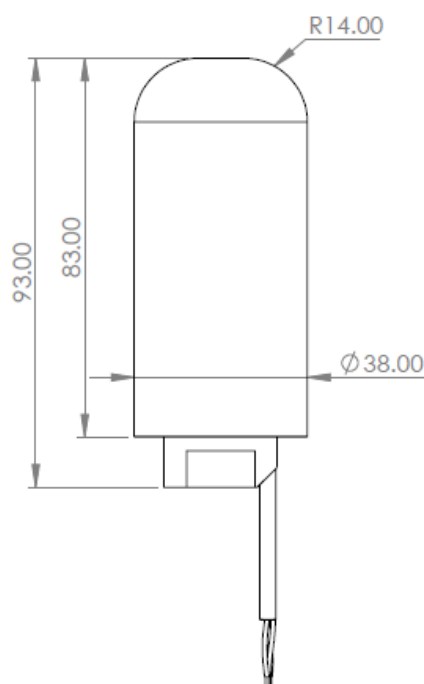
ALUMINIUM STRAIGHT



NYLON DOMED



NYLON STRAIGHT



ALL COVERS ARE FITTED WITH AN M5 COUNTERSUNK SCREW, SUB-FLUSH FROM THE TOP OF THE COVER

*Sense
Analyse
Control*

Services for:

- Data Logging
- Telemetry
- Controls
- Wiring

Contact us

KA Sensors Ltd
Unit 14 & 15
The Old Malthouse
Springfield Road
Grantham
Lincolnshire
United Kingdom
NG31 7BG

kasensors.com
sales@kasensors.com
+44(0)1476 568057

GST 10.18